

BASIC INFORMATION

/// VENUE

absolute room size	width 12,5m depth 19m height 3-4m clearance 3,4m (rig)
capacity	standing: 450 people seated: 180 people
stage	7m x 4,2m x 0,6m (w x d x h, solid stage) clearance 2,7m (rig), 2,3m (lights)
merch fee	-

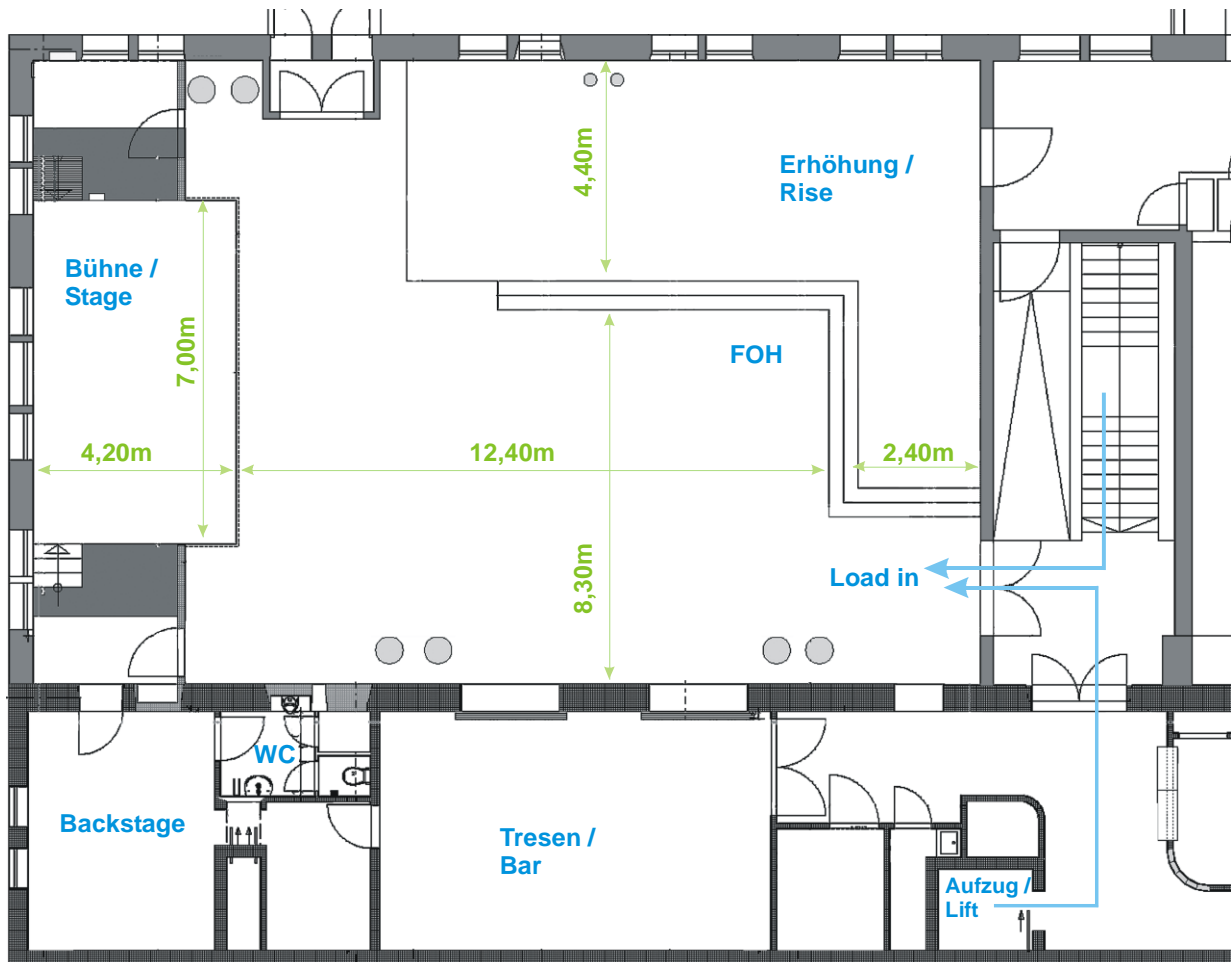
/// BACKSTAGE

lounge	19m ² fridge, sofa, table & chairs, mirror, water
kitchen	-
production office	8m ² long desk, telephone, free WiFi
toilets	1
showers	1

/// PARK & LOAD

parking	please use the parking lot „Kaufland“ for free parking we need the licence plate of your car in advance
loading	about 50m – by stairs or lift (2 nd floor)
nightliner power	32A 3ph. CEE

/// FLOOR PLAN



TECHNICAL INFORMATION

/// SOUND

To provide the best possible concert-experience for our audience we would like to request that the average sound-pressure-level during the show is maximum 99db(A) at the front of house.

main-PA speaker d&b audiotechnik
 02x 24S
 04x V-GSUB
 02x E8 (Downfill)

/// VENUE SHEET - CLUBBÜHNE



KULTURZENTRUM
E-WERK
Erlangen

main-PA amps	01x d&b D20 01x d&b D80
main-PA signal	PA via left-right or left-right-sub Analog (XLR) Digital AES/EBU (XLR) Dante (96 kHz)
FOH desk	01x Allen & Heath C3500 incl. Dante Card <i>on request: Allen & Heath S5000, SQ5/7</i>
stagebox	01x Allen & Heath DM32 Dante
monitor desk	- There are solid walls left & right of the stage, so there is no space for a separate monitor desk!
monitoring speaker	06x d&b MAX15
monitoring amps	03x Yamaha P7000S
multicore system	04x CAT 6a 32/08 analog
microphones	Shure SM58, SM57, Beat52A, Beta91A, SM81 Sennheiser e606, e604 Oktava MK012, MK219 BSS AR133 <i>other microphones on request</i>
stands	01x K&M bassdrum-stand, ultra-small, heavy 10x K&M stand tall 08x K&M stand small 02x K&M stand with round base
power supply sound stage	01x 16A CEE, 1ph 01x 16A Schuko, 1ph
power supply sound FOH	01x 16A Schuko, 1ph

/// LIGHTING

stage lights	10x Clay Paky Mini-B 06x Clay Paky Axcor Spot 300 02x Martin Atomic 3000 DMX 06x 2-Light Blinder DWE
---------------------	---

/// VENUE SHEET - CLUBBÜHNE



KULTURZENTRUM
E-WERK
Erlangen

front lights	04x Arri ST1 p.o. 02x ETC Source4 jr. incl. iris
side lights	06x Expolite TourLED 42CM MKII
haze / smoke	01x Smoke Factory Tour Hazer II 01x Martin magnum 2000 (dancefloor)
dancefloor lights (disco only)	20x Ayrton MagicDot SX 08x Expolite TourWash Mini 01x Martin Atomic 3000 DMX 04x Stairville CB-100 02x Mirrorball 30cm
house lights	ERCO-LED system, dimmable via DMX
lighting desk	MA-Lighting grandMA2 onPC command wing Tourpack V2
DMX universe	2 universes (1: stage, 2: dancefloor)
dimming system	Ultralite 12x10A dimmer channels
power supply lights stage	01x 16A Schuko, 1ph
power supply lights FOH	01x 16A Schuko, 1ph

/// VIDEO

projector	01x Panasonic PT-MZ680 6000 ANSI, WUXGA (1900x1200) input HDMI
screen	01x ceiling-installed motorscreen 5x2,8m (middle of stage)

CONTACT

/// VENUE

address E-Werk Kulturzentrum GmbH
Fuchsenwiese 1
91054 Erlangen
Germany

phone +49 (0)9131 8005 0

fax +49 (0)9131 8005 10

mail info@e-werk.de

/// DEPARTMENTS

booking Holger Watzka
holger.watzka@e-werk.de
+49 (0)9131 8005 54

venue rental Johanna Sachse
johanna.sachse@e-werk.de
+49 (0)9131 8005 14

house technic Andreas Drechsler
andreas.drechsler@e-werk.de
+49 (0)9131 8005 57

event technology Sebastian Simons
sebastian.simons@e-werk.de
+49 (0)9131 8005 20